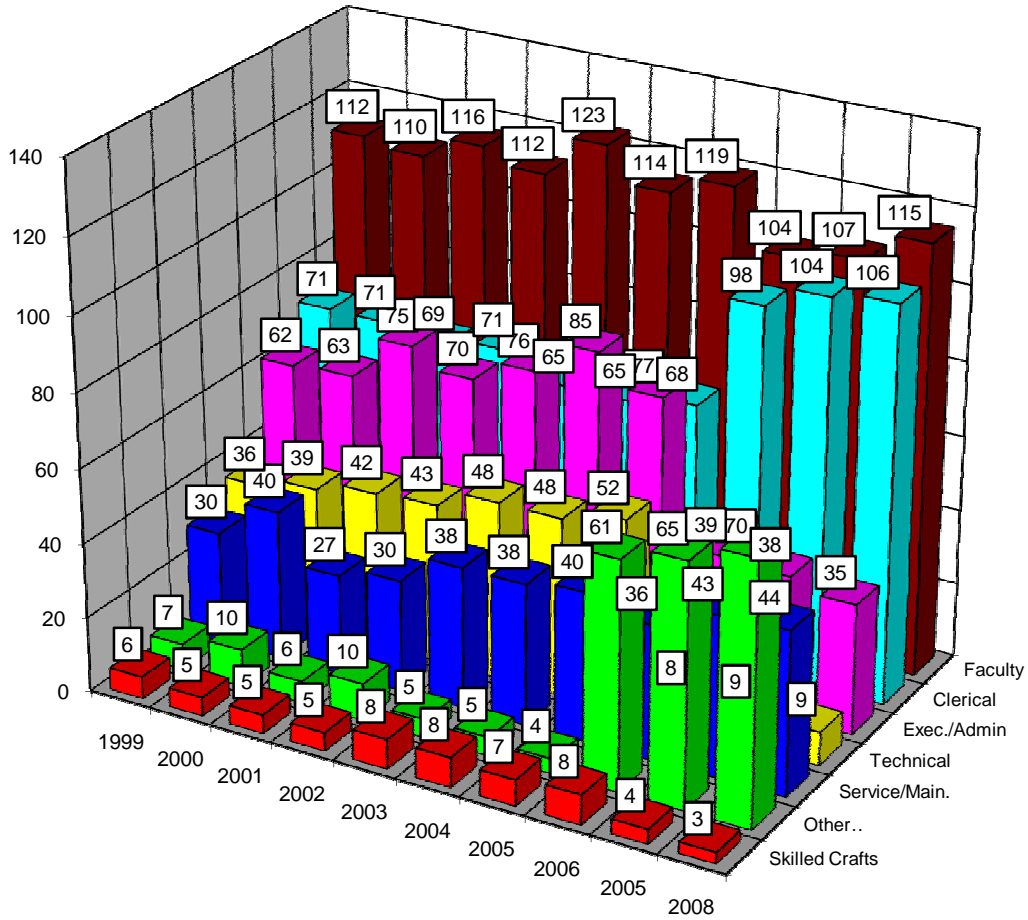
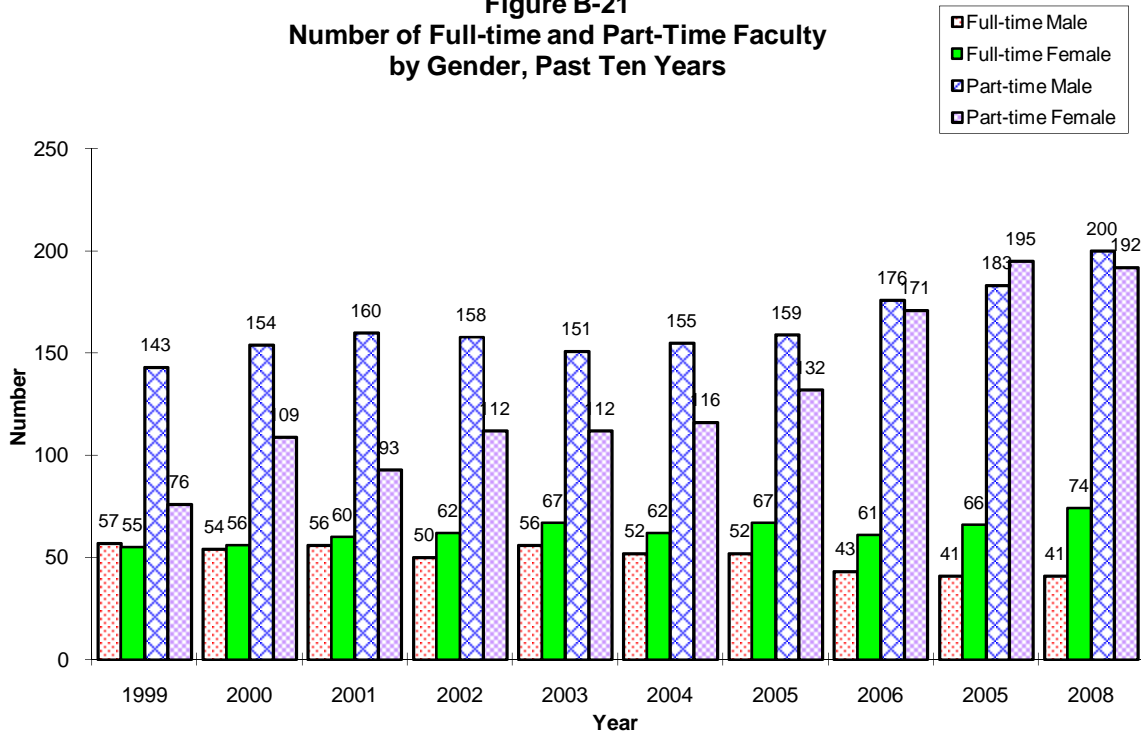


Occupational Category	1999		2000		2001		2002		2003		2004		2005		2006		2007		2008	
	FT	PT	FT	PT	FT	PT	FT	PT	FT	PT	FT	PT	FT	PT	FT	PT	FT	PT	FT	PT
<b>Executive/Administrative</b>																				
Male	28	0	26	1	25	1	24	1	24	1	27	3	25	2	15	0	15	0	14	0
Female	34	5	37	4	50	6	46	6	52	5	58	3	52	2	24	2	23	2	21	2
Sub-total	62	5	63	5	75	7	70	7	76	6	85	6	77	4	39	2	38	2	35	2
<b>Faculty</b>																				
Male	57	143	54	154	56	160	50	158	56	151	52	155	52	159	43	176	41	183	41	200
Female	55	76	56	109	60	93	62	112	67	112	62	116	67	132	61	171	66	195	74	192
Sub-total	112	219	110	263	116	253	112	270	123	263	114	271	119	291	104	347	107	378	115	392
<b>Graduate Assistants</b>																				
Male	0	0	0	0	0	0	0	0	0	0	0	0	0	0	0	0	0	0	0	0
Female	0	0	0	0	0	2	0	0	0	0	0	0	0	0	0	0	0	0	0	0
Sub-total	0	0	0	0	0	2	0	0	0	0	0	0	0	0	0	0	0	0	0	0
<b>Other Professional</b>																				
Male	3	7	2	4	2	5	1	7	1	6	1	5	1	8	15	13	19	13	21	13
Female	4	13	8	11	4	10	9	17	4	18	4	20	3	18	46	12	46	12	49	12
Sub-total	7	20	10	15	6	15	10	24	5	24	5	25	4	26	61	25	65	25	70	25
<b>Technical/Paraprofessional</b>																				
Male	11	5	15	2	14	4	15	4	12	5	13	4	12	3	4	0	5	0	5	0
Female	25	7	24	9	28	10	28	9	36	6	35	6	40	5	4	1	4	3	4	3
Sub-total	36	12	39	11	42	14	43	13	48	11	48	10	52	8	8	1	9	3	9	3
<b>Clerical</b>																				
Male	4	1	4	2	4	2	5	2	4	4	4	0	4	3	9	2	11	1	11	1
Female	67	30	67	33	65	35	66	32	61	33	61	33	64	25	89	13	93	14	95	14
Sub-total	71	31	71	35	69	37	71	34	65	37	65	33	68	28	98	15	104	15	106	15
<b>Skilled Crafts</b>																				
Male	6	0	5	0	5	2	5	0	8	0	8	0	7	0	8	0	4	0	3	0
Female	0	0	0	0	0	0	0	0	0	0	0	0	0	0	0	0	0	0	0	0
Sub-total	6	0	5	0	5	2	5	0	8	0	8	0	7	0	8	0	4	0	3	0
<b>Service/Maintenance</b>																				
Male	23	5	32	4	20	0	23	3	28	5	29	9	31	10	29	10	34	11	36	10
Female	7	0	8	0	7	0	7	1	10	0	9	0	9	1	7	1	9	2	8	2
Sub-total	30	5	40	4	27	0	30	4	38	5	38	9	40	11	36	11	43	13	44	12
<b>Total</b>																				
Male	132	161	138	167	126	174	123	175	133	172	134	176	132	185	123	201	129	208	131	224
Female	192	131	200	166	214	156	218	177	230	174	229	178	235	183	231	200	241	228	251	225
<b>Grand Total</b>	<b>324</b>	<b>292</b>	<b>338</b>	<b>333</b>	<b>340</b>	<b>330</b>	<b>341</b>	<b>352</b>	<b>363</b>	<b>346</b>	<b>363</b>	<b>354</b>	<b>367</b>	<b>368</b>	<b>354</b>	<b>401</b>	<b>370</b>	<b>436</b>	<b>382</b>	<b>449</b>

**Figure B-20**  
**Number of Full-time Employees**  
**by Category, Past Ten Years**



**Figure B-21**  
**Number of Full-time and Part-Time Faculty**  
**by Gender, Past Ten Years**



**Figure B-22**  
**Number of Full-time Professional Employees**  
**by Gender, Past Ten Years**

