

Occupational Category	2000		2001		2002		2003		2004		2005		2006		2007		2008		2009	
	FT	PT	FT	PT	FT	PT	FT	PT	FT	PT	FT	PT	FT	PT	FT	PT	FT	PT	FT	PT
Executive/Administrative																				
Male	26	1	25	1	24	1	24	1	27	3	25	2	15	0	15	0	14	0	15	0
Female	37	4	50	6	46	6	52	5	58	3	52	2	24	2	23	2	21	2	21	2
Sub-total	63	5	75	7	70	7	76	6	85	6	77	4	39	2	38	2	35	2	36	2
Faculty																				
Male	54	154	56	160	50	158	56	151	52	155	52	159	43	176	41	183	41	200	44	198
Female	56	109	60	93	62	112	67	112	62	116	67	132	61	171	66	195	74	192	69	214
Sub-total	110	263	116	253	112	270	123	263	114	271	119	291	104	347	107	378	115	392	113	412
Graduate Assistants																				
Male	0	0	0	0	0	0	0	0	0	0	0	0	0	0	0	0	0	0	0	0
Female	0	0	0	2	0	0	0	0	0	0	0	0	0	0	0	0	0	0	0	0
Sub-total	0	0	0	2	0	0	0	0	0	0	0	0	0	0	0	0	0	0	0	0
Other Professional																				
Male	2	4	2	5	1	7	1	6	1	5	1	8	15	13	19	13	21	13	23	15
Female	8	11	4	10	9	17	4	18	4	20	3	18	46	12	46	12	49	12	51	14
Sub-total	10	15	6	15	10	24	5	24	5	25	4	26	61	25	65	25	70	25	74	29
Technical/Paraprofessional																				
Male	15	2	14	4	15	4	12	5	13	4	12	3	4	0	5	0	5	0	6	0
Female	24	9	28	10	28	9	36	6	35	6	40	5	4	1	4	3	4	3	4	3
Sub-total	39	11	42	14	43	13	48	11	48	10	52	8	8	1	9	3	9	3	10	3
Clerical																				
Male	4	2	4	2	5	2	4	4	4	0	4	3	9	2	11	1	11	1	10	1
Female	67	33	65	35	66	32	61	33	61	33	64	25	89	13	93	14	95	14	102	14
Sub-total	71	35	69	37	71	34	65	37	65	33	68	28	98	15	104	15	106	15	112	15
Skilled Crafts																				
Male	5	0	5	2	5	0	8	0	8	0	7	0	8	0	4	0	3	0	3	0
Female	0	0	0	0	0	0	0	0	0	0	0	0	0	0	0	0	0	0	0	0
Sub-total	5	0	5	2	5	0	8	0	8	0	7	0	8	0	4	0	3	0	3	0
Service/Maintenance																				
Male	32	4	20	0	23	3	28	5	29	9	31	10	29	10	34	11	36	10	34	13
Female	8	0	7	0	7	1	10	0	9	0	9	1	7	1	9	2	8	2	10	2
Sub-total	40	4	27	0	30	4	38	5	38	9	40	11	36	11	43	13	44	12	44	15
Total																				
Male	138	167	126	174	123	175	133	172	134	176	132	185	123	201	129	208	131	224	135	227
Female	200	166	214	156	218	177	230	174	229	178	235	183	231	200	241	228	251	225	257	249
Grand Total	338	333	340	330	341	352	363	346	363	354	367	368	354	401	370	436	382	449	392	476

Figure B-20
Number of Full-time Employees
by Category, Past Ten Years

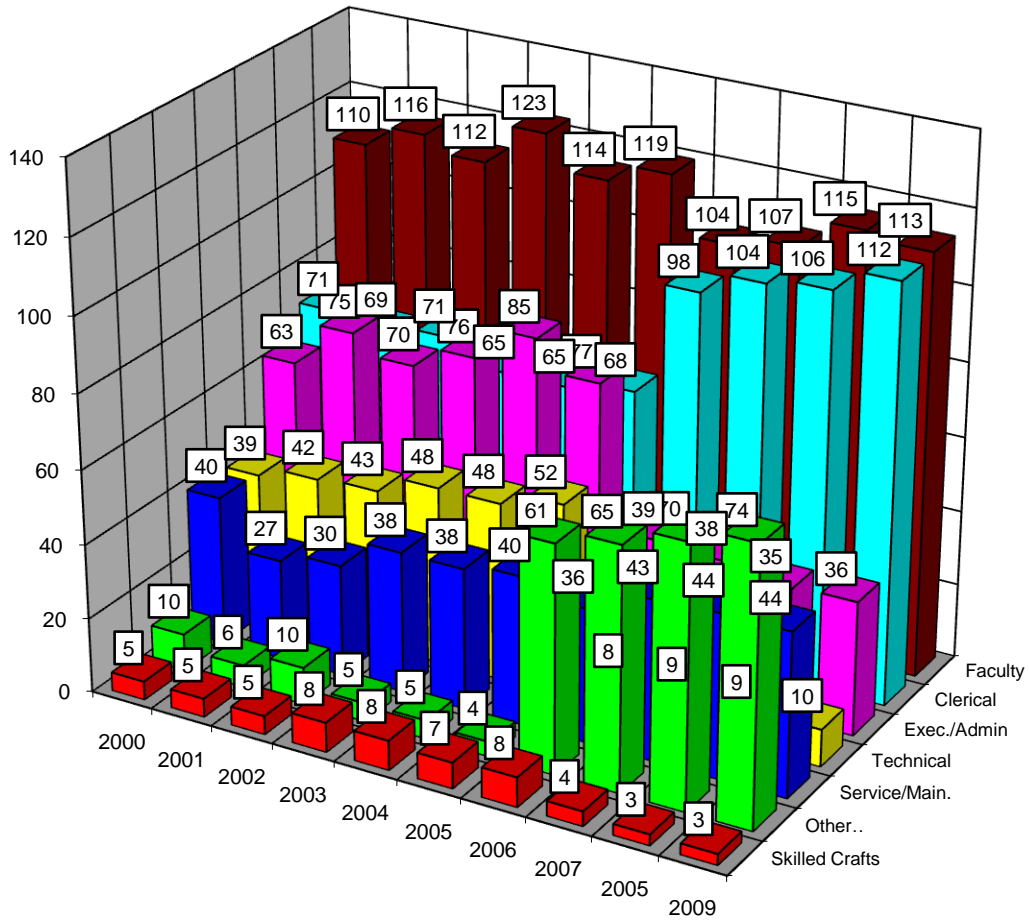


Figure B-21
Number of Full-time and Part-Time Faculty
by Gender, Past Ten Years

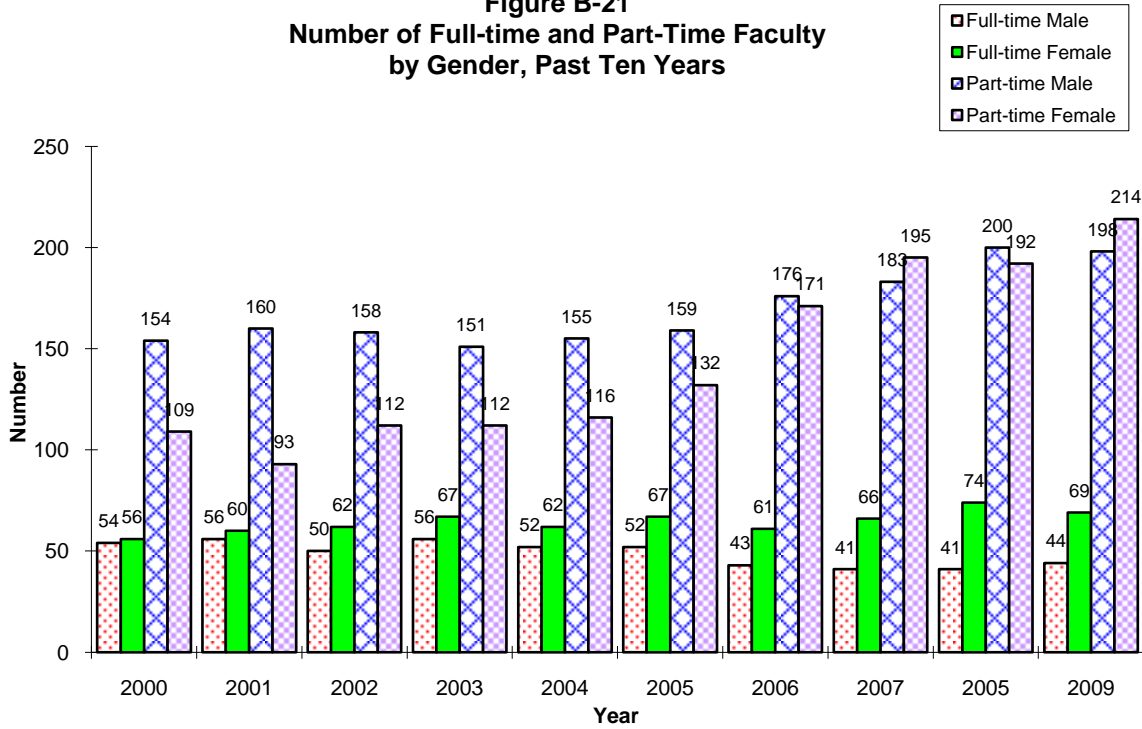


Figure B-22
Number of Full-time Professional Employees
by Gender, Past Ten Years

