



OCEAN
COUNTY COLLEGE

2022-2023 **Fact Book**



Message from the Executive Director

The mission of the Office of Institutional Planning, Effectiveness, and Compliance (IPEC) is to support data-informed decision-making, strategic planning, continuous improvement within Ocean County College, and to ensure the college adheres to MSCHE accrediting standards. Institutional Research, one of the four main branches of IPEC, specifically supports continuous improvement within the college by providing meaningful data and analysis. This is utilized across campus to make data-informed decisions that promote student success and increase efficiencies. In addition, IR staff communicate data to enhance the College's planning processes and to keep all of Ocean County College's constituents informed of pertinent institutional data.



Institutional Research staff hold themselves accountable for the integrity of the data that they report as they strive to support a culture of evidence and continuous improvement. As such, the data contained within the Fact Book are official figures; many have been submitted to both the state and federal government, including the State of New Jersey's Office of the Secretary of Higher Education and to the federal Integrated Postsecondary Education Data System (IPEDS).

The data presented includes a historical look at trends and narratives to give readers contextual information. If you have any questions regarding the content of the Fact Book or would like to further discuss any of the data, please contact the Institutional Research staff at research@ocean.edu.

Dr. Alexa M. Beshara-Blauth



Executive Director of Institutional Planning, Effectiveness, and Compliance

Ocean County College Leadership*

Dr. Jon H. Larson, *President*

Sara Winchester, *Executive Vice President of Finance and Administration*

Dr. Joseph Konopka, *Vice President of Academic Affairs*

Dr. Gerald Racioppi, *Vice President of Student Affairs*

Dr. Eileen Garcia, *Vice President of e-Learning and Learning Enterprises*

Ocean County College Board of Trustees*

Jerry J. Dasti, *Chair*

Joseph E. Teichman

Linda L. Novak, *Vice Chair*

Carl V. Thulin, Jr.

Frank J. Dupignac Jr., *Treasurer*

Steven A. Zabarsky

Stephan R. Leone, *Secretary*

R. Joseph Latshaw III,

Robert A. Fall

Student/Alumni Member

Charles Muller

John C. Sahradek, *Counsel*

Joanne Pehlivanian

Ocean County Board of Commissioners*

Joseph H. Vicari, *Director*

Gary Quinn, *Deputy Director*

Barbara Jo Crea

Virginia E. Haines, *Liaison to Ocean County College*

John P. Kelly

** at the time of publication*

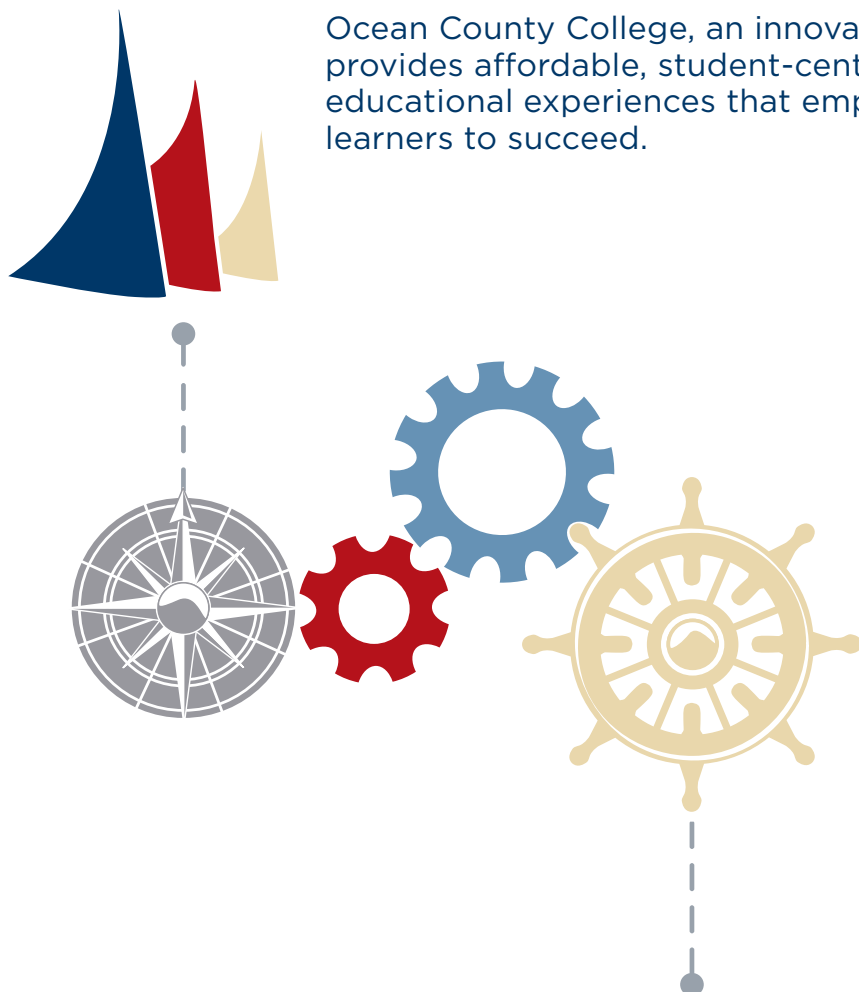
Contents

About Ocean County College	7
Section 1 Tracking Enrollment at Ocean County College	8
Fall Enrollment	8
Annual Enrollment	9
Student Type	9
Federal Cohort Enrollment	10
Section 2 Demographic Trends	11
Gender	11
Race and Ethnicity	12
Age	13
Section 3 Academic Programs	14
What do students at OCC study?	14
Section 4 Expanding Ocean County College's Reach	20
Where do our students come from?	21
What is Ocean County College's reach into local high schools?	21
Where do our students attend class?	22
Reaching for the STARS	23
Section 5 Business and Community	24
Section 6 Affordable Pathways: Kean@Ocean	25
Section 7 Student Success	26
Retention Rate	26
Graduation Rate	26
Transfer Rate	26
Alumni Survey	27
Section 8 Degrees Conferred	27
Section 9 Financial Aid	30



Mission Statement

Ocean County College, an innovative academic leader, provides affordable, student-centered, high-quality educational experiences that empower diverse learners to succeed.



Vision Statement

Ocean County College will be the boldest, most innovative and entrepreneurial student-centered college in the nation, will promote exemplary learning experiences, and will advance community college education internationally.



Guiding Principles

Ocean County College is Student-Focused: the success of our students is our priority.

Student-Centered:

We empower our students to learn and succeed through distinctive, high-quality learning opportunities.

Accessible:

We welcome all people to the Ocean County College community by providing affordable, flexible, and barrier-free educational opportunities.

Innovative:

We proactively seek opportunities to improve through ingenuity and strategic partnerships.

Collaborative:

We practice teamwork and open communication within a culture of civility and mutual respect.

Courageous:

We act with determination to serve our students and achieve our goals.

Trustworthy:

We exercise integrity, transparency and data-informed decision-making.

2021-2026 Goals

Strategic Goal 1:

Empower students to learn, engage, and achieve

Strategic Goal 2:

Optimize and expand enrollment of all learners

Strategic Goal 3:

Elevate organizational effectiveness

Strategic Goal 4:

Expand relationships with external stakeholders





About Ocean County College

Since its founding in 1964 as New Jersey's first county college, Ocean County College (OCC) has been dedicated to educating and serving residents of Ocean County, New Jersey, and beyond as an innovative academic leader. Affordable, student-centered, high-quality education that prepares and empowers diverse learners to contribute to and succeed in varied, global societies has been its hallmark. Its embodiment of a vibrant institution dedicated to student success is evident in its growing campus, expanded programming, increased partnerships and collaborations, international focus and online learning expertise. Most of all, the fact that its alumni consistently advance their education at top universities and colleges or move directly into fulfilling careers reinforces its approach. As it has grown, so has its reputation and its place in the community and academia.

OCC invests in and fosters academic, economic, and cultural excellence and ensures financial strength through new revenue generation, national and international university and corporate partnerships, and a technologically progressive and entrepreneurial spirit. OCC is an established community leader, with myriad opportunities for the community to engage in educational and cultural pursuits. From 979 students in its first semester, fall 1966, enrollment has increased, to 7,186 students in the fall of 2022; today, OCC boasts more than 49,000 alumni.

As a public, two-year community college, OCC is sponsored by Ocean County, the State of New Jersey and the students of Ocean County College. This pillar of the community provides exceptional educational opportunities for individuals of all ages and at all stages of life. Set on 275 acres in Toms River, New Jersey, (the county seat), OCC is a comprehensive, open admissions institution providing postsecondary associate degree and certificate programs on its main campus in Toms River, 14 additional locations including the Southern Education Center in Manahawkin, and at several other instructional sites and through distance learning.

OCC offers three degrees, the Associate in Arts (A.A.), the Associate in Science (A.S.) and the Associate in Applied Science (A.A.S.), in a variety of subjects. Currently, there are 24 degree programs, including our award-winning Nursing Program. OCC offers many other options, transfer tracks (joint admission programs with New Jersey colleges and universities), and areas of emphasis. Certificate programs are offered in more than 40 areas of study.

As a testament to OCC's dedication to providing higher education opportunities to underserved populations, OCC has continued its expansion to local high schools with 13 in-county high schools now designated as additional locations. The Ocean County Vocational Technical School's Grunin Performing Arts Academy, which allows high school students to become immersed in the college experience, is located on OCC's campus.

Ocean County College also continues its expansion with baccalaureate institutions. The Kean Ocean partnership between OCC and Kean University offers students the opportunity to earn bachelor's and master's degrees in select subjects without leaving OCC's campus.

The College's commitment to online learning and innovation has helped it reach around the globe.

In addition to serving its students, OCC is committed to outreach and serves community members through workforce development pathways including job training and enrichment and professional education courses, some of which may lead to credit-bearing programs. The college also holds events such as art exhibits, lectures and musical and dramatic productions in the theatre or the gallery at the Jay and Linda Grunin Center for the Arts. The Robert J. Novins Planetarium is widely known (and utilized) for its excellent programming.

In the early 21st century, an increase in enrollment and addition of programs drove the need for OCC to strategically expand its facilities and add several buildings on campus. In 2018, the H. Hovnanian Health Sciences Building opened, allowing OCC to expand its programs to include allied health curricula in addition to nursing. The same year, the Instructional Building, built in 1967, underwent a major renovation to provide a more modern and collaborative environment for students and faculty. The Grunin Performing Arts Academy High School building was completed in 2019. Most recently, the building formerly known as the College Bookstore was renovated in 2021 and converted to a Conference Center composed of a lounge and numerous large and small meeting rooms. A new, state-of-the-art Student Enrollment Building opened in 2021 to serve as a one-stop shop for student enrollment services and the first point of contact to welcome new and returning students. More renovations and new buildings are planned.

Accreditation



Ocean County College is an accredited institution and a member of the **Middle States Commission on Higher Education, (MSCHE)** www.msche.org. Ocean County College's accreditation status is Non-Compliance Warning. The Commission's most recent action on the institution's accreditation status on June 22, 2023 was to warn the institution.

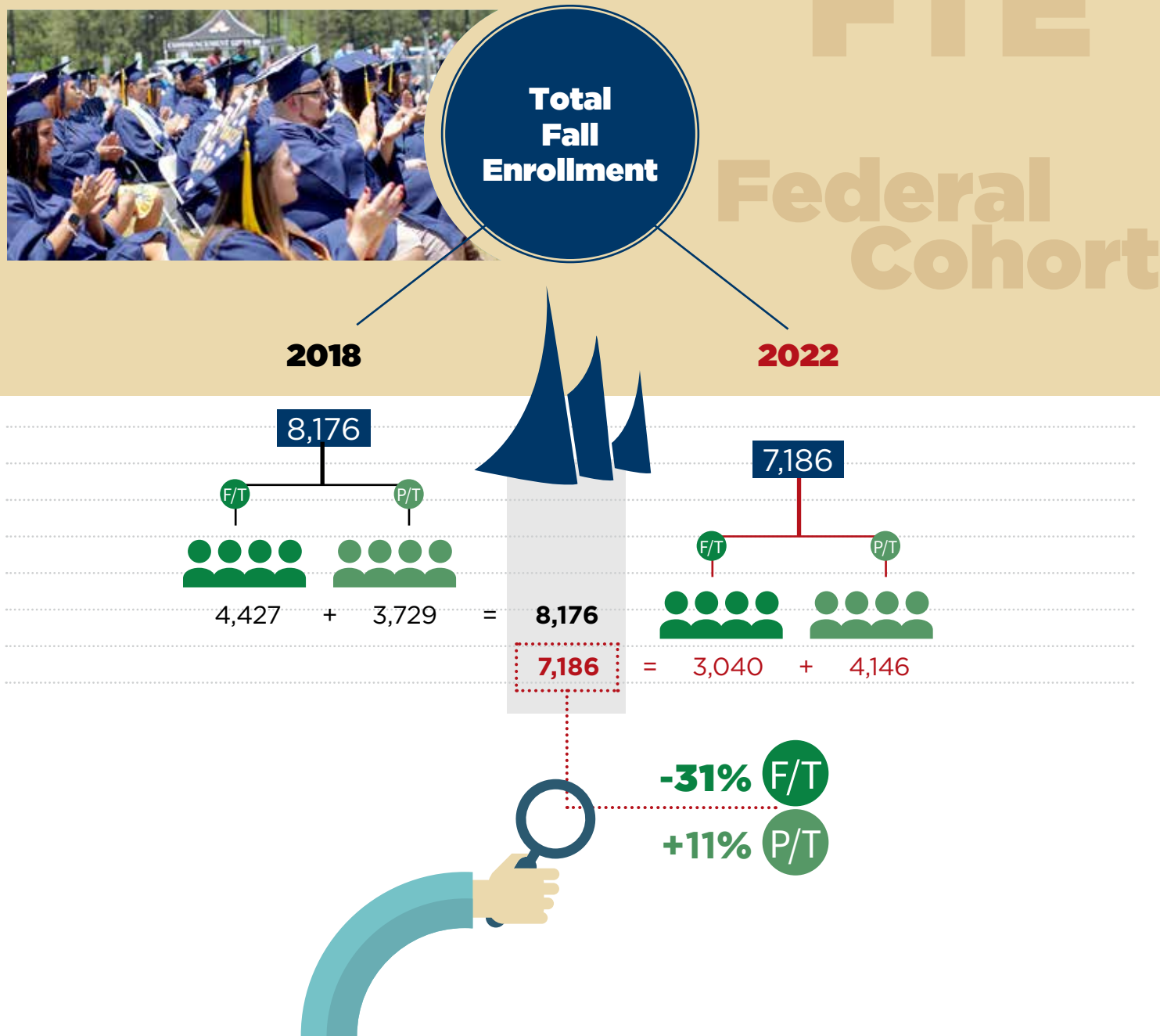
MSCHE is an institutional accrediting agency recognized by the U.S. Secretary of Education and the Council for Higher Education Accreditation (CHEA).



Accreditation Commission for Education in Nursing (ACEN)
3390 Peachtree Rd NE • Suite 1400 • Atlanta, GA 30326 • www.acenursing.org

Section 1: Tracking Enrollment at Ocean County College

Analyzing enrollment provides OCC with an understanding of its student body and how best to serve it. The College monitors statistics and demographics, such as gender, age, race and ethnicity, part-time to full-time ratios, and enrollment by program. This data is also important for institutional planning purposes, such as scheduling, staffing, and meeting facilities requirements.



Fall Enrollment

Historically, community college enrollment often correlates with unemployment rates. As unemployment rises, community college enrollment also increases as displaced workers seek new knowledge and skills. Both **national and New Jersey community college enrollment peaked in 2010** and have **steadily declined** as the economy has improved and citizens have returned to the workforce. Similarly, Ocean County College's fall enrollment peaked in 2009, at 10,415 students, and has declined each subsequent fall. COVID-19 has negatively affected enrollment at OCC as well as national community college enrollment. There has also been a shift away from full-time to part-time attendance. Through a wide range of initiatives related to the College's Strategic Plan, **OCC projects that there will be enrollment growth in the coming years.**

Figure 1-1. Fall Enrollment by Attendance Status 2018-2022

	Fall 2018	Fall 2019	Fall 2020	Fall 2021	Fall 2022
Full-time	4,427	4,250	3,735	3,384	3,040
Part-time	3,749	3,921	3,745	3,937	4,146
Total	8,176	8,171	7,480	7,321	7,186

Source: Fall census enrollment as reported to SURE (Student Unit Record) System. Full-time students are those taking 12 or more credits, part-time students take 11 credits or fewer.

Figure 1-2. Fall Enrollment Full-Time Equivalent/FTE 2018-2022

	Fall 2018	Fall 2019	Fall 2020	Fall 2021	Fall 2022
FTE	5,686	5,566	4,992	4,706	4,432

The calculation for FTE or full-time equivalent is 1 full-time student =1, 1 part-time student =0.335737 per IPEDS Glossary. Fall enrollment has declined while fiscal year enrollment has increased due to the expanded selections of terms as evidenced by fiscal year FTEs.

Annual Enrollment

Annual enrollments are based on two measures: **unduplicated headcount** and **FTE** (full-time equivalent) students. The annual unduplicated headcount is the count of all students who were enrolled in one or more credit-bearing courses during the given fiscal year July 1-June 30. FTEs are calculated based on fiscal year credit hours divided by 30.

Figure 1-3. Unduplicated Headcounts, Credit Hours, and FTEs FY2018-FY2022

	FY2018	FY2019	FY2020	FY2021	FY2022
Unduplicated Headcount	14,075	14,516	14,718	13,214	12,610
Credit Hours	200,109	202,243	199,708	178,382	167,289
FTEs	6,670	6,741	6,657	5,946	5,576

Student Type

Enrollment by student type: students are grouped into four “types” or registration statuses. **First-time** students are those who have not previously enrolled for credit at a post-secondary institution unless it was during their high school years. **Transfer** students are those who have previously attended another college and transfer or seek to transfer credits from their prior institution(s). **Stop-out/Readmit** are students who have previously attended OCC but have stopped out and are returning. **Continuing** students are those students who were enrolled during the previous regular semester.

The distribution by student type has changed as high school students enroll in OCC's Early College program, increasing the percent of first-time students. There has also been a decline in continuing students.

Figure 1-4. Fall Enrollment by Student Type 2018-2022

	Fall 2018		Fall 2019		Fall 2020		Fall 2021		Fall 2022	
1st Time	2,499	31%	2,619	32%	2,570	34%	2,836	39%	3,205	45%
Transfer	349	4%	299	4%	236	3%	199	3%	187	3%
Stop-Out/Readmit	1,080	13%	968	12%	862	12%	1,051	14%	768	11%
Continuing	4,248	52%	4,285	52%	3,812	51%	3,235	44%	3,026	42%
Total	8,176		8,171		7,480		7,321		7,186	

This table uses NJ SURE Stop-Out/Readmit definition, a student returning after missing one or more regular semesters. Institutional definition is one or more years missed.

Federal Cohort Enrollment

A federal cohort is comprised of **first-time, full-time, degree- and certificate-seeking** students **enrolled at fall census**. It is the population used by the **federal government to calculate success measures, such as retention and graduation rates**, which are included in the Student Outcomes section of our Fact Book. **This population is approximately one-fifth of our fall enrollment.**

Figure 1-5. Federal Cohort Students Fall 2018-2022

	Fall 2018	Fall 2019	Fall 2020	Fall 2021	Fall 2022
Count	1,667	1,630	1,481	1,407	1,345
% of Total Enrollment	20%	20%	20%	19%	19%

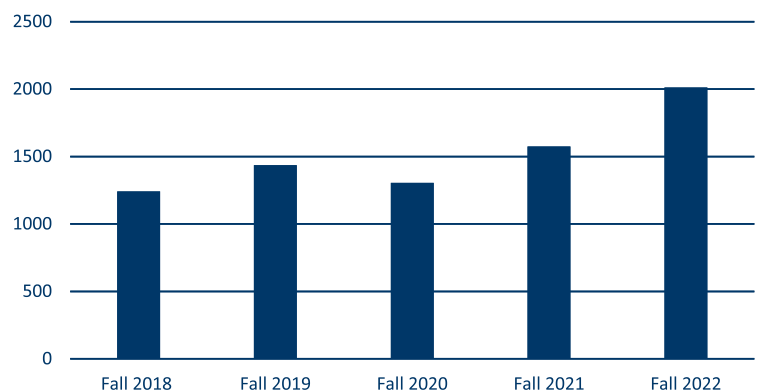
Federal cohort students are first-time, full-time, degree or certificate-seeking students enrolled at fall census.

Dual Enrollment

Ocean County College is committed to supporting the excellence of our county high school students by providing access to Early College opportunities. Early College allows students the opportunity to earn college credits while in high school, increasing their preparedness for college and enhancing their resumes. In certain circumstances, these credits can count towards both state high school graduation requirements and transferable college credit that students can take with them towards an Associate or Bachelor's Degree.

College Academy is a set curriculum for high-achieving students to earn an Associate Degree while still in high school. Courses are offered both at the high school and at OCC. College Academy is restricted to specific partner school districts who have articulations with OCC.

Dual Enrolled Students

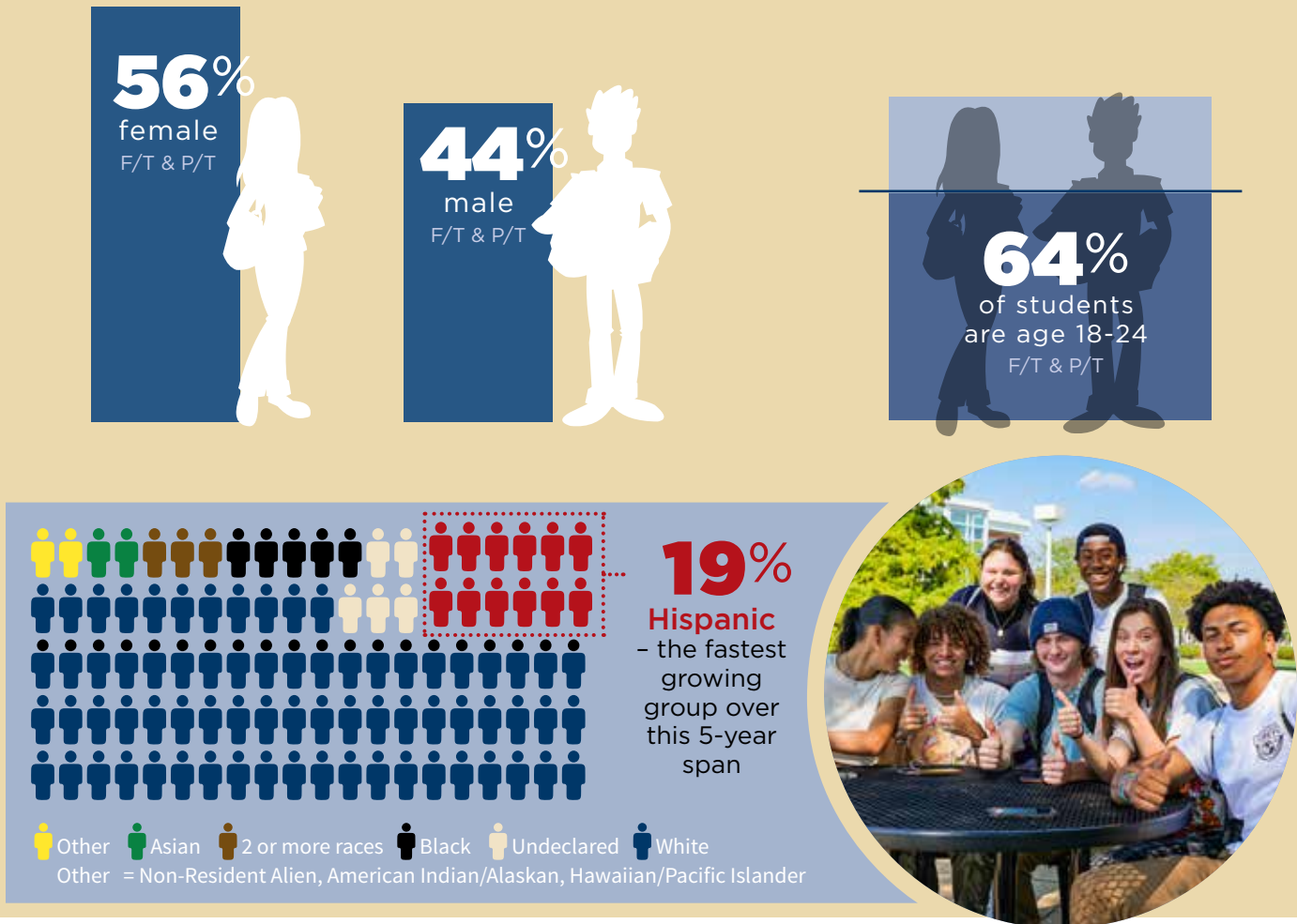


Dual enrolled students are in unique terms created to accommodate the high school year and are not a sub-set of fall enrollment.



Section 2: Demographic Trends

Tracking demographics, such as gender, race, ethnicity and age, allows Ocean County College to better understand how the student population changes over time and how best to serve changing needs.



Gender

The gender distribution of male to female has been fairly stable at approximately **56-58% female** and **42-44% male** from fall 2018 through fall 2022.

Figure 2-1. Fall 2018-2022 Enrollment by Gender and Full-Time, Part-Time Status

	Fall 2018		Fall 2019		Fall 2020		Fall 2021		Fall 2022	
	FT	PT	FT	PT	FT	PT	FT	PT	FT	PT
Male	2101	1423	2035	1531	1718	1420	1548	1556	1495	1634
Female	2326	2326	2215	2390	2017	2325	1837	2380	1545	2512
Total	4427	3749	4250	3921	3735	3745	3385	3936	3040	4146

Undeclared students are counted as male.

Race and Ethnicity

The following tables show the distribution of race and ethnicity of OCC students and how it has changed from fall 2018 through fall 2022. **Hispanic is the fastest growing group** for the period, increasing from **14%** in **fall 2018** to **19%** in **fall 2022**. The white population as a percent of the total fell from 68% to 66% over the same period.

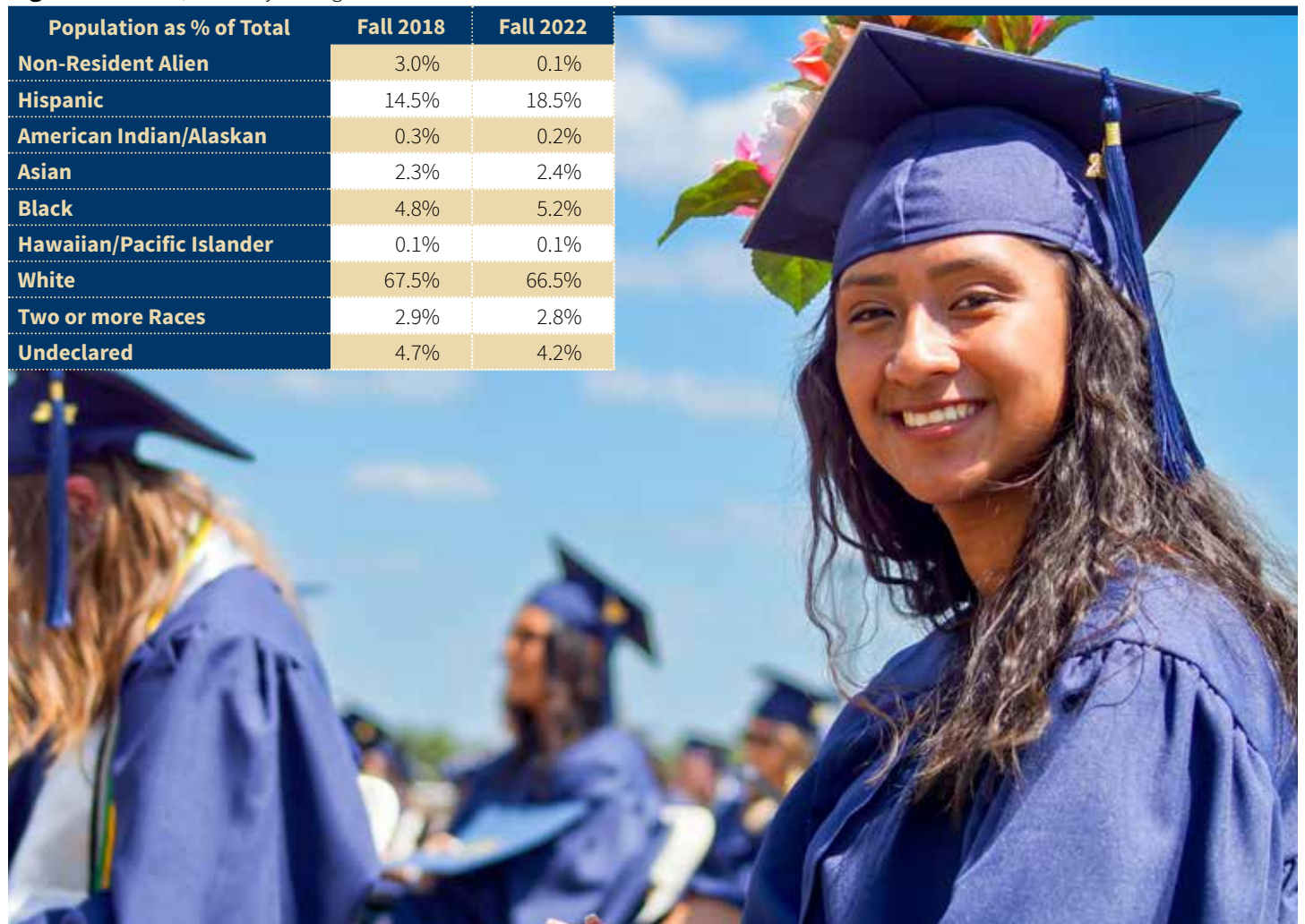
Figure 2-2. Fall 2018-2022 Enrollment by Race/Ethnicity and Full-Time, Part-Time Status

	Fall 2018		Fall 2019		Fall 2020		Fall 2021		Fall 2022	
	FT	PT	FT	PT	FT	PT	FT	PT	FT	PT
Non-Resident Alien	54	194	52	154	48	95	2	0	3	1
Hispanic	740	446	758	480	691	498	674	612	627	704
American Indian/Alaskan	12	10	11	6	3	7	3	5	1	10
Asian	93	91	100	87	73	114	74	102	75	101
Black	208	188	185	237	184	230	151	222	144	230
Hawaiian/Pacific Islander	6	0	3	4	4	9	4	6	4	5
White	2979	2540	2844	2596	2409	2443	2174	2509	2009	2767
Two or More Races	134	100	137	118	140	105	128	108	93	111
Undeclared	201	180	160	239	183	244	175	372	84	217
Total	4427	3749	4250	3921	3735	3745	3385	3936	3040	4146

Fall 2021 forward DACA and undocumented students are reported in their race/ethnicity categories. Non-Residents are student visa holders.

Figure 2-3. Race/Ethnicity Change Fall 2018- Fall 2022

Population as % of Total	Fall 2018	Fall 2022
Non-Resident Alien	3.0%	0.1%
Hispanic	14.5%	18.5%
American Indian/Alaskan	0.3%	0.2%
Asian	2.3%	2.4%
Black	4.8%	5.2%
Hawaiian/Pacific Islander	0.1%	0.1%
White	67.5%	66.5%
Two or more Races	2.9%	2.8%
Undeclared	4.7%	4.2%



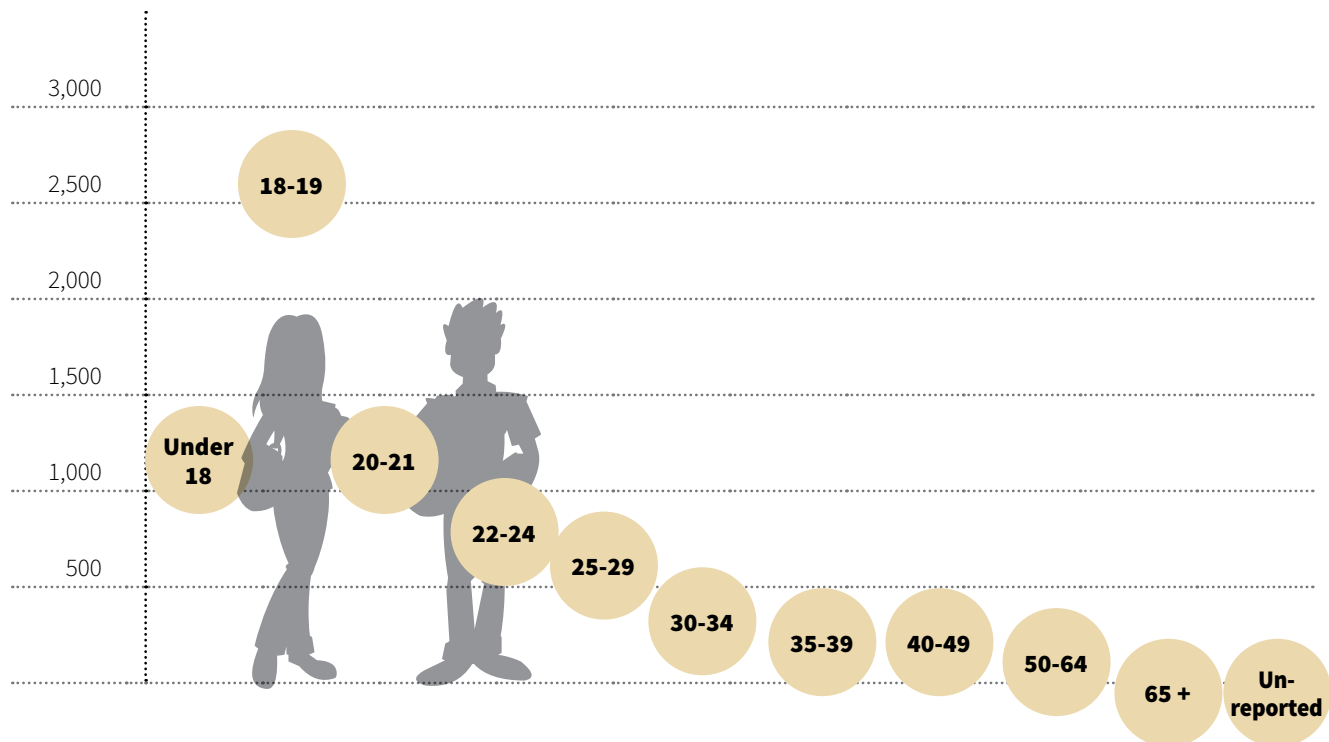
Age

36% of fall students are 18-19 years old, 64% are 18-24.

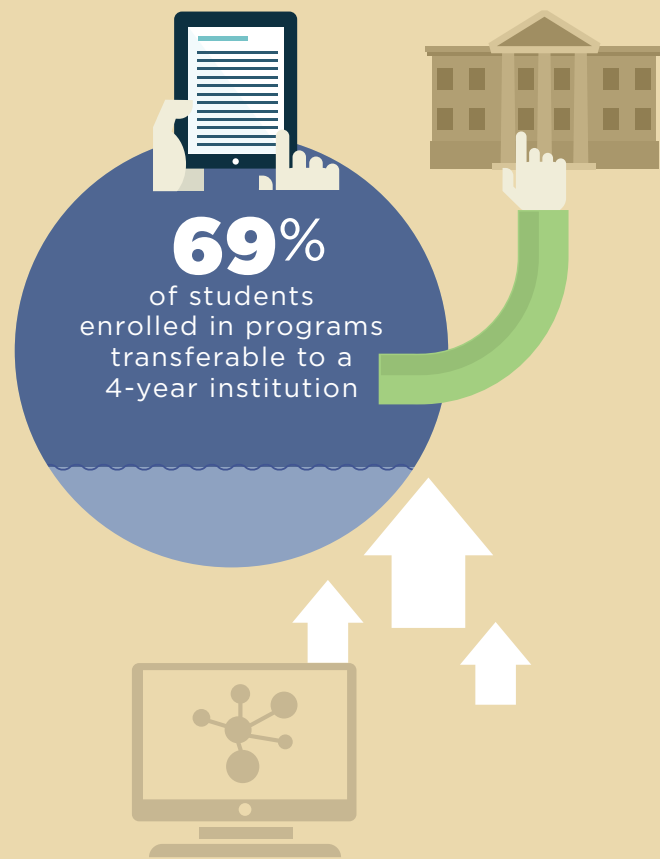
Figure 2-4. Fall 2018-2022 Enrollment by Age

	Fall 2018	Fall 2019	Fall 2020	Fall 2021	Fall 2022
Under 18	332	370	333	860	1204
18-19	2,992	2,995	2,880	2,624	2,620
20-21	1,836	1,743	1,487	1,380	1,236
22-24	1,092	1,080	894	772	728
25-29	864	864	838	685	539
30-34	381	417	383	374	307
35-39	213	245	234	175	191
40-49	281	259	247	249	200
50-64	156	157	128	132	116
65 and over	24	18	10	22	20
Unreported	5	23	46	48	25

Figure 2-4a. Age Distribution, Fall 2022



Section 3: Academic Programs



What do OCC students study?

A sampling of Fall 2022 academic program enrollment:

132 Engineering

134 Graphic Arts

269 Criminal Justice

299 Nursing

653 Business Administration

2,138 Liberal Arts



Ocean County College is **primarily a transfer institution** evidenced by program enrollment patterns. **Approximately 69% of fall 2022 students** were **enrolled in programs transferable to a four-year institution**.

What do students at OCC study?

A.A. in Liberal Arts and **A.S. in General Studies** afford students many program pathways and are by far OCC's **highest enrolled programs**. In fall 2022, 30% of students were enrolled in various Liberal Arts programs, and 14% of students were enrolled in various General Studies programs. The following table contains student enrollment by program, fall 2018 to fall 2022.



The subsequent table contains fall 2022 full- and part-time enrollment by program.

Figure 3-1. Student Enrollment by Academic Program Fall 2018 - Fall 2022

Program Title	Fall 2018	Fall 2019	Fall 2020	Fall 2021	Fall 2022
A.A. PROGRAMS					
Digital Mass Media-Broadcast Production (AA.DMM.BP)	46	63	62	55	64
Digital Mass Media-Journalism (AA.DMM.JOUR)	32	32	30	25	24
Fine Arts (AA.FA)	30	43	44	49	48
Global Studies (AA.GLOBL)	12	5	12	8	6
Liberal Arts (AA.LA)	2661	1927	1357	1089	1070
Liberal Arts-Education (AA.LA.EDUC)		30	109	145	121
Liberal Arts-English Concentration (AA.LA.ENGL)		5	34	40	48
Liberal Arts-History Concentration (AA.LA.HIST)		10	32	48	47
Liberal Arts Option in Photography (AA.LA.PHOT)			2	6	6
Liberal Arts-Pre-Nursing Track (AA.LA.PNURS)	326	865	871	750	583
Liberal Arts-Psychology Concentration (AA.LA.PSYC)		68	224	258	263
Performing Arts (AA.PA)	25	10	5		
Performing Arts-Administration Option (AA.PA.ADMN)	4	4	6	3	3
Performing Arts-Dance Option (AA.PA.DANC)	1	4	5	5	4
Performing Arts-Music Option (AA.PA.MUSC)	18	29	24	28	38
Performing Arts-Theatre Option (AA.PA.THTR)	10	23	28	22	16

Program Title	Fall 2018	Fall 2019	Fall 2020	Fall 2021	Fall 2022
A.A.S. PROGRAMS					
Business (AAS.BUS)	44	34	84	81	49
Business - Paralegal Studies Option (AAS.BUS.LEGA)	15	19	14	13	8
Computer Science-Information Technology Option (AAS.CS)	10	10	15	18	19
Computer Science-Info Tech Artificial Intelligence Option (AAS.CS.AI)					3
Computer Science-Info Tech Cloud Comp Concentration (AAS.CS.CC)		2	2	1	2
Computer Science-Info Tech Data Mgmt Concentration (AAS.CS.DM)		2	1	1	1
Computer Science-Info Tech Networking Concentration (AAS.CS.NET)		1	3	1	1
Computer Science-Info Tech Programming Concentration (AAS.CS.PROG)				3	1
American Sign Language-English Interpreting (AAS.IT)	52	48	48	40	51
Nursing (AAS.NURS)	316	333	337	302	299
Technical Studies-Computer Technology Option (AAS.TS.COMP)	2	1	5	5	5
Technical Studies-Industrial/Technical Option (AAS.TS.TECH)	1	1	3	3	
Visual Communications Technology-Computer Graphics (AAS.VCT.CG)	13	3	2		
Visual Communications Tech-Electronic Media Technology (AAS.VCT.EMT)	1				
Visual Communications Technology-Digital Photography (AAS.VCT.PHOT)	2	1			
Web Marketing (AAS.WBMKT)	1	3	13	10	11

Program Title	Fall 2018	Fall 2019	Fall 2020	Fall 2021	Fall 2022
A.S. PROGRAMS					
Business Administration (AS.BA)	614	708	562	575	559
Business Administration Data Analytics Option (AS.BA.DA)					4
Business Administration-Health Administration Option (AS.BA.HA)	9	29	34	23	27
Business Administration Supply Chain Management Option (AS.BA.SCM)			1	2	7
Business Administration-Sports Management Option (AS.BA.SM)	23	29	58	70	56
Chemistry (AS.CHEM)				4	6
Criminal Justice (AS.CJ)	335	382	357	302	269
Computer Science (AS.CS)	122	136	151	152	123
Computer Science-Cyber Information Security Option (AS.CS.CIS)	7	14	23	37	47
Computer Science-Game Development/Design (AS.CS.GDD)	56	60	46	45	46
Computer Science-Information Systems (AS.CS.IS)	2				
Computer Science-Information Technology (AS.CS.IT)	53	48	36	28	26
Engineering (AS.ENG)	173	181	177	169	132
Environmental Studies (AS.ES)	47	75	64	68	61
General Studies (AS.GE)	6	4	1	1	
General Studies-Business Option (AS.GE.BUS)	515	390	311	245	258
General Studies-Computer Science Option (AS.GE.CS)	84	70	58	65	65
General Studies-Health and Physical Education (AS.GE.HPE)	50	81	79	85	100
General Studies-Humanities (AS.GE.HUM)	73	57	41	41	52
General Studies-Math (AS.GE.MATH)	124	123	83	77	54
General Studies-Pre-Nursing (AS.GE.PNURS)		1	1	1	
General Studies-Science (AS.GE.SCI)	742	635	565	471	373
General Studies-Social Science (AS.GE.SS)	156	148	118	88	90
Graphic Arts, Design, and Media (AS.GADM)	46	92	106	120	134
Homeland Security (AS.HLSC)	32	14	2	2	
Hospitality, Recreation, and Tourism Management (AS.HRTM)	33	36	36	23	21
Occupational Therapy Assistant (AS.OTA)	1	1	1		
Public Service (AS.PBS)	39	36	35	36	21
Social Work (AS.SW)		47	82	88	71
Social Work Medical and Behavioral Health Option (AS.SW.MEDI)					2

Program Title	Fall 2018	Fall 2019	Fall 2020	Fall 2021	Fall 2022
CERTIFICATES					
Accounting - Cert of Completion (CC.ACCT)	4	12	1		
Addictions Counseling - Cert of Completion (CC.ALDC)	17	24	28	49	39
Adv Mfg & Mechatronics - Cert of Completion (CC.AMAM)					2
Business Studies - Cert of Completion (CC.BS)	5	4	1	1	2
Cybersecurity - Cert of Completion (CC.CYBER)				1	1
Data Analytics - Cert of Completion (CC.DATA)					1
Digital Photography - Cert of Completion (CC.PHOT)					1
Environmental Sustainability - Cert of Completion (CC.ENVSU)					1
Forensic Acct & Fraud Exam-Certificate of Completion (CC.FAFE)			3		
Financial Market Analysis-Certificate of Completion (CC.FMA)			1	1	
Holistic Health and Wellness-Cert of Completion (CC.HHAW)		2	1		
Ind Hygiene/Hazardous Materials - Cert of Completion (CC.IHHM)					4
Information Technology-Cert of Completion (CC.INFO)	1	1	1	1	4
Legal Secretary-Cert of Completion (CC.LS)	1	1	1	1	2
Teacher Aide - Cert of Completion (CC.TA)	3	2			
Accounting - Cert of Proficiency (CT.ACCT)		33	19	11	3
Advanced Accounting - Cert of Proficiency (CT.ADVAC)				30	24
Administrative Office Mgmt./Bookkeeping-Cert of Proficiency (CT.AOMW)		4	3		
Criminal Justice - Cert of Proficiency (CT.CJ)	2	2	1		
Exercise Science - Cert of Proficiency (CT.EXER)			1	6	
Fire Science - Cert of Proficiency (CT.FS)		2	2	1	
Information Technology - Cert of Proficiency (CT.INFO)	3		3	2	
Paralegal Studies - Cert of Proficiency (CT.LEGA)	12	15	18	20	15
Nutrition - Cert of Proficiency (CT.NUTR)	2	1	3	6	2
Personal Training - Cert of Proficiency (CT.PT)	3	1	1		
Physical Therapy Aide - Cert of Proficiency (CT.PTA)	3	3	1	1	
Small Business Management - Cert of Proficiency (CT.SBM)	3	4	4	6	6
Sports Management - Cert of Proficiency (CT.SM)	2	1			
Theatre Production - Cert of Prof (CT.TP)		2	2		1
Non-Matriculated Students	1150	1084	985	1356	1683
Total Enrollment Headcount	8176	8171	7480	7321	7186

The following table contains full- and part-time enrollment by program for fall 2022.

Figure 3-2. Student Enrollment by Academic Program and Full-Time, Part-Time Status, Fall 2022

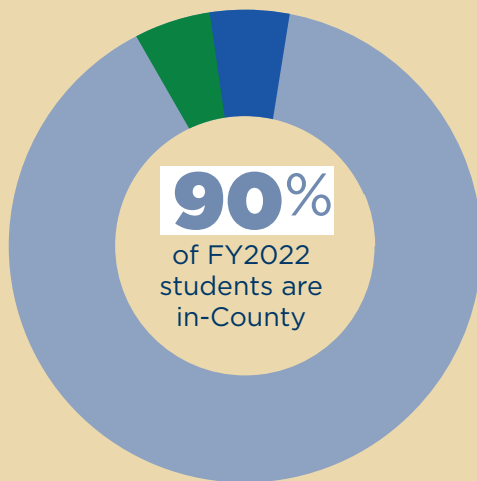
PROGRAM TITLE	Full-Time	Part-Time	Total
A.A. PROGRAMS			
Digital Mass Media -- Broadcast Production (AA.DMM.BP)	43	21	64
Digital Mass Media--Journalism (AA.DMM.JOUR)	15	9	24
Fine Arts (AA.FA)	26	22	48
Global Studies (AA.GLOBL)	2	4	6
Liberal Arts (AA.LA)	602	468	1070
Liberal Arts Education Option (AA.LA.EDUC)	75	46	121
Liberal Arts English Option (AA.LA.ENGL)	31	17	48
Liberal Arts History Option (AA.LA.HIST)	29	18	47
Liberal Arts Option in Photography (AA.LA.PHOT)	5	1	6
Liberal Arts, Pre-Nursing Track (AA.LA.PNURS)	174	409	583
Liberal Arts Psychology Option (AA.LA.PSYC)	163	100	263
Performing Arts, Arts Administration Option (AA.PA.ADMN)	3		3
Performing Arts Dance Option (AA.PA.DANC)	3	1	4
Performing Arts Music Option (AA.PA.MUSC)	26	12	38
Performing Arts Theatre Option (AA.PA.THTR)	12	4	16
A.A.S. PROGRAMS			
Business (AAS.BUS)	25	24	49
Business - Paralegal Studies Option (AAS.BUS.LEGA)	1	7	8
Computer Science-Information Technology Option (AAS.CS)	7	12	19
Computer Science/Info Tech Artificial Intelligence Option (AAS.CS.AI)	3		3
Computer Science/Info Tech Cloud Computing Concn (AAS.CS.CC)		2	2
Computer Science/Info Tech Data Mgmt Concentration (AAS.CS.DM)		1	1
Computer Science/Info Tech Networking Concentration (AAS.CS.NET)	1		1
Computer Science/Info Tech Programming Concentration (AAS.CS.PROG)		1	1
American Sign Language--English Interpreting (AAS.IT)	12	39	51
Nursing (AAS.NURS)	120	179	299
Technical Studies - Computer Technology Option (AAS.TS.COMP)	3	2	5
Web Marketing (AAS.WBMKT)	7	4	11
A.S. PROGRAMS			
Business Administration (AS.BA)	370	189	559
Business Administration Data Analytics Option (AS.BA.DA)	4		4
Business Administration Health Administration Option (AS.BA.HA)	9	18	27
Business Administration Supply Chain Management Option (AS.BA.SCM)	3	4	7
Business Administration Sports Management Option (AS.BA.SM)	35	21	56
Chemistry (AS.CHEM)	4	2	6
Criminal Justice (AS.CJ)	167	102	269
Computer Science (AS.CS)	73	50	123

PROGRAM TITLE	Full-Time	Part-Time	Total
Computer Science Cyber Information Security Option (AS.CS.CIS)	29	18	47
Computer Science - Game Development/Design (AS.CS.GDD)	21	25	46
Computer Science - Information Technology (AS.CS.IT)	15	11	26
Engineering (AS.ENGR)	77	55	132
Environmental Studies (AS.ES)	35	26	61
Graphic Arts, Design, and Media (AS.GADM)	85	49	134
General Studies - Business Option (AS.GE.BUS)	133	125	258
General Studies - Computer Science Option (AS.GE.CS)	27	38	65
General Studies - Health and Physical Education (AS.GE.HPE)	61	39	100
General Studies - Humanities (AS.GE.HUM)	23	29	52
General Studies - Math (AS.GE.MATH)	35	19	54
General Studies - Science (AS.GE.SCI)	202	171	373
General Studies - Social Science (AS.GE.SS)	44	46	90
Hospitality, Recreation, and Tourism Management (AS.HRTM)	9	12	21
Public Service (AS.PBS)	7	14	21
Social Work (AS.SW)	32	39	71
Social Work Medical and Behavioral Health Option (AS.SW.MEDI)	1	1	2
CERTIFICATES			
Addictions Counseling - Cert of Completion (CC.ALDC)	2	37	39
Adv Mfg & Mechatronics - Cert of Completion (CC.AMAM)	2		2
Business Studies - Cert of Completion (CC.BS)		2	2
Cybersecurity - Cert of Completion (CC.CYBER)		1	1
Data Analytics - Cert of Completion (CC.DATA)		1	1
Environmental Sustainability - Cert of Completion (CC.ENVSU)		1	1
Ind Hygiene/Hazardous Materials - Cert of Completion (CC.IHHM)		4	4
Information Technology - Cert of Completion (CC.INFO)		4	4
Legal Secretary - Cert of Completion (CC.LS)		1	1
Digital Photography - Cert of Completion (CC.PHOT)	1		1
Accounting - Cert of Proficiency (CT.ACCT)		3	3
Advanced Accounting - Cert of Proficiency (CT.ADVAC)	1	23	24
Paralegal Studies - Cert of Proficiency (CT.LEGA)		15	15
Legal Secretary - Cert of Proficiency (CT.LS)		1	1
Nutrition - Cert of Proficiency (CT.NUTR)		2	2
Small Business Management - Cert of Proficiency (CT.SBM)	2	4	6
Theatre Production - Cert of Proficiency (CT.TP)		1	1
GRAND TOTAL	2897	2606	5503

Balance of students were enrolled in non-matriculating programs.

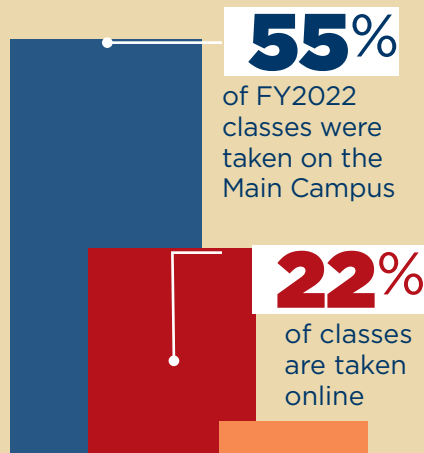
Section 4: Expanding Ocean County College's Reach

Residency Status



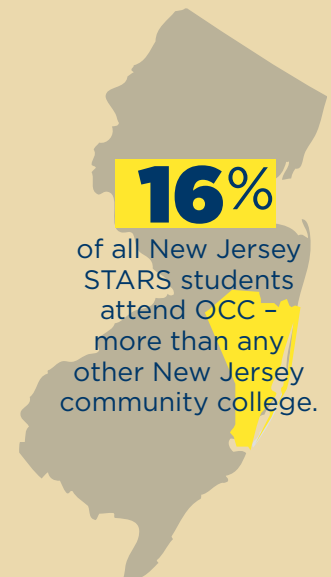
- Out-of-County/In-State
- Out-of-State/Out-of-Country

Class Attendance



- e-Learning
- Other off-site location

NJ STARS



Ocean County High Schools: Yield Rates

A high school's graduating class that went on to enroll at OCC

HIGHEST FALL 2022 YIELD %

44% Brick Memorial

SMALLEST YIELD %

Pt. Pleasant Beach **15%**



Where do our students come from?

The following table shows the distribution of students by their locale from fiscal year 2018-2021. In FY2022 approximately 10% of students were from outside Ocean County. In FY2022 e-Learning enrolled students from 45 states, 1 U.S territory, and 17 countries.

Figure 4-1. Credits as % of Total by Residency Status FY2018-FY2022

	FY18 as % of Total	FY19 as % of Total	FY20 as % of Total	FY21 as % of Total	FY22 as % of Total
In-County	90.3%	89.6%	89.1%	88.6%	90.2%
Out-of-County/In-State	4.6%	4.7%	5.4%	6.2%	5.5%
Out-of-State/Out-of-Country	5.1%	5.7%	5.5%	5.2%	4.3%

Census date credits by residency status

What is Ocean County College's reach into local high schools?

The majority of first-time students are recent graduates of **Ocean County high schools**. The following table shows the **yield rate**, the percent of each high school's graduating class that went on to enroll at OCC in the fall.

Figure 4-2. Ocean County High School Yield Rates Fall 2018 - Fall 2022

High School	2018	2019	2020	2021	2022
Barnegat	25%	33%	32%	22%	24%
Brick Memorial	31%	33%	36%	37%	44%
Brick Township	39%	36%	39%	37%	26%
Central Regional	34%	36%	38%	31%	31%
Jackson Liberty	19%	18%	24%	21%	25%
Jackson Memorial	19%	23%	23%	18%	23%
Lacey	37%	29%	28%	25%	23%
Lakewood	30%	25%	31%	23%	25%
Manchester	25%	33%	33%	31%	30%
New Egypt	13%	27%	20%	26%	24%
Pinelands	27%	27%	25%	21%	16%
Pt. Pleasant Beach	15%	13%	17%	12%	15%
Pt. Pleasant Boro	27%	37%	37%	33%	27%
Southern Regional	30%	25%	28%	24%	23%
Toms River East	34%	37%	42%	32%	36%
Toms River North	34%	31%	34%	33%	34%
Toms River South	33%	35%	30%	31%	28%
Total	27%	27%	31%	28%	28%

Where do our students attend class?

In addition to **Ocean County College's Main Campus in Toms River** and the **Southern Education Center in Manahawkin**, and several Ocean County high schools, classes are offered at locations throughout the county as well as online. The majority of our students attend the **Main Campus**, but as the table below reflects, **online enrollment continues to increase**, while both Main Campus and Southern Education Center credits as percent of total have decreased. *

Figure 4-3. FY2018-2022 Credits by Location: Enrolled Credits as a Percent of Total

	FY2018	FY2019	FY2020	FY2021	FY2022
Barnegat HS			0.02%	0.02%	0.02%
Brick Memorial HS	0.16%	0.25%	0.37%	0.45%	0.43%
Brick Township HS	0.13%	0.18%	0.19%	0.19%	0.24%
Business Technology Institute	0.18%	0.16%	0.36%		0.31%
Central Regional HS	0.09%	0.22%	0.52%	0.39%	1.03%
Ain Shams U.	0.73%	1.40%	1.32%	0.85%	0.75%
e-Learning	24.77%	26.29%	27.76%	33.65%	31.56%
Jackson Liberty HS	0.22%	0.17%	0.05%	0.05%	0.11%
Jackson Memorial HS		0.08%	0.07%	0.05%	0.03%
Career & Technical Institute	0.19%	0.39%			
Lakewood HS		0.35%	0.18%	0.25%	0.49%
Lacey Township HS	0.71%	0.47%	0.46%	0.65%	0.81%
Southern Education Center	4.46%	4.34%	4.21%	0.36%	0.61%
Main Campus	67.46%	64.44%	62.85%	4.18%	56.63%
Donovan Catholic HS		0.01%	0.12%	0.21%	0.19%
Manchester Twp HS	0.01%	0.24%	0.10%	0.16%	0.25%
Arborbrook Christian Academy		0.08%	0.17%	0.14%	0.18%
New Egypt HS				0.04%	0.10%
Pt. Pleasant Beach HS	0.58%	0.49%	0.41%	0.49%	0.75%
Pt. Pleasant Boro HS	0.08%	0.18%	0.21%	0.21%	0.46%
Pinelands Regional HS			0.03%	0.24%	0.78%
*Remote Learning				56.86%	2.85%
Southern Regional HS		0.02%	0.08%	0.11%	0.24%
Toms River HS East			0.16%	0.03%	0.38%
#REF!			0.07%	0.03%	0.17%
Toms River HS South			0.02%	0.13%	0.23%
OCVTS-Brick		0.03%	0.04%	0.04%	0.07%
OCVTS-Toms River	0.08%	0.03%	0.06%	0.02%	0.07%
OCVTS-Waretown	0.15%	0.05%	0.18%	0.22%	0.27%

*Due to COVID-19 pandemic, 57% of FY21 credits were transitioned to remote learning.

Reaching for the STARS

The New Jersey Student Tuition Assistance Scholarship (NJ STARS) covers community college tuition for qualifying students. These students must be ranked in the top 15% of their high school class. **Ocean County College has consistently had the highest number of NJ STARS among New Jersey's 18 community colleges.** Most current comparative data is from fiscal year 2021, during which OCC had 16% or 292 of 1875 NJ STARS students.

Figure 4-4. NJ STARS Enrollment, FY2017 - FY2021

	FY2017	FY2018	FY2019	FY2020	FY2021
OCC Student Count	263	265	258	272	292
Value/\$K	734	804	776	798	1,023
NJCC Student Count	1,756	1,610	1,612	1,759	1,875
Value/\$K	4,939	4,767	4,775	5,311	5,728
OCC Students as % of NJCC	15%	16%	16%	15%	16%
OCC Value/\$K as % of NJCC	15%	17%	16%	15%	18%

Source: NJ Office of the Secretary of Higher Education (OSHE)



Section 5: Business and Community

Ocean County College is committed to teaching, learning and outreach. OCC provides resources to its local community, including events and activities, public performances, continuing education and training programs. OCC's state-of-the-art facilities are open to serve the needs of the community.

The following non-credit enrollment table represents enrollments in job training and enrichment courses.

Figure 5-1. Non-Credit Enrollment, FY 2018-2022

	Total Number of Registrations ¹	Unduplicated Headcount	Total Clock Hours (One Clock Hour = 60 minutes)	Total FTEs ²
Open Enrollment				
FY2018	2,920	2,169	96,975	216
FY2019	2,930	2,112	99,983	222
FY2020	2,078	1,424	87,477	194
*FY2021	353	270	39,458	88
FY2022	1,142	931	117,312	261
Customized Training				
FY2018	1,263		11,854	26
FY2019	1,007		8,781	20
FY2020	486		5,899	13
*FY2021	120		1,448	3
FY2022	282		6,096	14

*FY2021-most activities were suspended due to COVID-19 restrictions.

¹ Includes all registrations in any course that started on July 1 through June 30.

² FTEs were computed by converting clock hours to credit hours (by dividing by 15), then converting credit hours to FTEs (dividing by 30).

The large number of FY2017 registrations is due to 2,882 students CSC LEE testing.

Source: SURE Non-credit Open Enrollment file and NJ IPEDS Form #31, Customized Training.



Section 6:

Affordable Pathways: Kean Ocean

Kean University and Ocean County College have established a partnership that enables area residents to complete the upper division courses required for certain Kean University undergraduate degree programs and specific graduate programs on the campus of Ocean County College. This provides the opportunity for students to stay close to home and complete their college education in one convenient location. The following table includes fall 2018 through fall 2022 enrollments by gender, race, and ethnicity demographics as well as student academic level.

Figure 6-1. Kean Ocean Student Enrollment Fall 2018 - Fall 2022

	Fall 2018	Fall 2019	Fall 2020	Fall 2021	Fall 2022
GENDER					
Female	754	763	701	567	572
Male	487	516	455	331	360
TOTAL	1,241	1,279	1,156	898	932
RACE/ETHNICITY					
Non-Resident Alien	6	50	8	4	46
Hispanic/Latino	130	143	149	132	141
American Indian/Alaska Native	4	4	4	1	2
Asian	20	21	25	20	21
Black/African American	50	50	49	47	47
Native Hawaiian/Pacific Islander	2	4	1	2	1
Two or More Races	25	28	23	17	22
White	900	888	826	620	572
Unknown	104	91	71	55	80
TOTAL	1,241	1,279	1,156	898	932
ACADEMIC LEVEL					
Undergraduate	1,130	1,153	1,044	807	856
Graduate	95	118	111	91	75
Doctoral	16	8	1	0	1
TOTAL	1,241	1,279	1,156	898	932

Provided by the Office of Institutional Research, Kean University. Kean Ocean students prior to 20FA are identified by admission status like "KO".



Section 7: Student Success

Higher education institutions receiving Title IV funds are required to report annually on several student success measures, including fall to fall retention, transfer and graduation rates. OCC recognizes that students have different goals in mind when they begin their education; as such, OCC prioritizes the success of students by assisting them in reaching their intended goals.

Retention

Fall to fall retention rates measures the percentage of fall, first-time, degree-seeking, full- and part-time students returning to the institution the following fall.

Figure 7-1. Fall to Fall Retention Rates 2017-2021 Cohorts

COHORT YEAR	# FT/FT COHORT	#FT/FT RETURNED OR COMPLETED	% FT/FT RETURNED OR COMPLETED	# FT/PT COHORT	#FT/PT RETURNED OR COMPLETED	% FT/PT RETURNED OR COMPLETED
2021	1407	902	64.1%	416	188	45.2%
2020	1481	964	65.1%	512	249	48.6%
2019	1630	1118	68.6%	389	158	40.6%
2018	1667	1212	72.7%	307	171	55.7%
2017	1654	1167	70.6%	296	137	46.3%

FT/FT=first-time, full-time. FT/PT=first-time, part-time

The retention rates stated above are for degree or certificate-seeking students and represent the percent of students who either returned the following fall or completed their program.

Graduation

The 150%, or **three-year graduation rates**, represents the percent of federal cohort students who complete their degrees or certificates within 150% of the time to degree (three years for a two-year associate program). **Ocean County College graduation rates are consistently among the highest for New Jersey community colleges.**

Figure 7-2. Three-Year Graduation Rates, Cohort Years 2015– 2019

Reporting Year	Cohort Year	# in Cohort	# Graduated	% Graduated
2023	2019	1630	646	39.6%
2022	2018	1667	653	39.2%
2021	2017	1654	627	37.9%
2020	2016	1728	654	37.8%
2019	2015	1546	529	34.2%

The graduation rates stated above are for first-time, full-time, degree or certificate-seeking students and represent the percentage completing their program within 150% of normal time to completion.

Transfer Rates

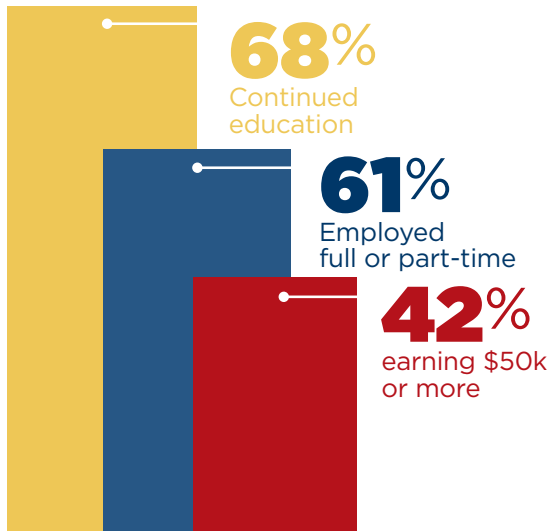
Figure 7-3. Three Year Transfer Rates, Cohort Years 2015 - 2019

Reporting Year	Cohort Year	# in Cohort	# Transferred	% Transferred
2023	2019	1630	157	9.6%
2022	2018	1667	184	11.0%
2021	2017	1654	243	14.7%
2020	2016	1728	239	13.8%
2019	2015	1546	201	13.0%

The transfer rates stated above are for first-time, full-time, degree or certificate seeking students that did not graduate from OCC but transferred to another institution within 150% of normal time to completion.

Section 7: Student Success cont.

Alumni Survey Results



- Continued their education at another degree-granting institution 68%
- Employed full or part-time 61%
- Of those reporting full-time employment, 42% reported earning \$50k or more annually

FY2022 OCC Graduates surveyed March 2023.
Self-reported data, 1395 surveyed, 13.3% response rate

Section 8: Degrees Conferred

Degree Attainment

OCC assists students in reaching their transfer goals; the **majority** of students graduate with **Liberal Arts or General Studies** degrees with the **intent to transfer** to a **four-year institution**. As displayed in the following table, **Liberal Arts degrees have comprised between 30.8% and 35%** and **General Studies between 30.6% and 41.3%** of degrees conferred. When **combined**, they range between **62.1% and 74.2%** of all conferred degrees.

Figure 8-1. Liberal Arts and General Studies Degrees Conferred as % of Total, FY2018-FY2022

	FY2018	FY2019	FY2020	FY2021	FY2022
AA.LA all concentrations	32.9%	33.7%	35.0%	30.8%	31.9%
AS.GE all options	41.3%	35.9%	32.9%	31.3%	30.6%
Liberal Arts and General Studies Combined	74.2%	69.7%	67.9%	62.1%	62.5%

FY 2022

A.A., A.S., and A.A.S. distribution



Figure 8-2a. FY2018-FY2022 Degrees Conferred by Program

Program Code	Program Title	FY2018	FY2019	FY2020	FY2021	FY2022
A.A. DEGREES CONFERRED						
AA.DMM.BP	Digital Mass Media -- Broadcast Production	16	9	11	16	16
AA.DMM.JOUR	Digital Mass Media--Journalism	3	8	6	4	7
AA.FA	Fine Arts	2	7	5	7	7
AA.GLOBL	Global Studies	4	3		2	2
AA.LA	Liberal Arts	485	501	583	451	389
AA.LA.EDUC	Liberal Arts - Education Option				3	8
AA.LA.ENGL	Liberal Arts - English Option				3	8
AA.LA.HIST	Liberal Arts - History Option			2	2	7
AA.LA.PSYC	Liberal Arts - Psychology Option			1	17	49
AA.PA	Performing Arts	6	7	4	1	2
AA.PA.ADMN	Performing Arts - Arts Administration Option		1	1		
AA.PA.DANC	Performing Arts - Dance Option			1		8
AA.PA.MUSC	Performing Arts - Arts Music Option		1	1	2	4
AA.PA.THTR	Performing Arts - Arts Theatre Option		1	1	3	15
A.A.S. DEGREES CONFERRED						
AAS.BUS	Business		1	1	3	4
AAS.BUS.LEGA	Business - Paralegal Studies Option	5	1	3	1	1
AAS.CS	Computer Science - Information Technology	1	2	2	1	2
AAS.DENT	Dental Hygiene	6				
AAS.FS	Fire Science		1			
AAS.HS	Health Science					1
AAS.IT	American Sign Language--English Interpreting	9	10	9	11	5
AAS.NURS	Nursing	135	127	140	150	109
AAS.VCT.CG	Visual Communications Technology - Computer Graphics	5	7	1	1	
AAS.VCT.EMT	Visual Communications Tech - Electronic Media Technology	1				
AAS.VCT.PHOT	Visual Communications Technology - Digital Photography	5	2		1	
AAS.WBMKT	Web Marketing			1		1
A.S. DEGREES CONFERRED						
AS.BA	Business Administration	74	154	196	206	179
AS.BA.HA	Business Administration - Health Admin Option		1		11	4
AS.BA.SM	Business Administration - Sports Mgmt Option			3	5	12
AS.CJ	Criminal Justice	56	50	67	68	67
AS.CS	Computer Science	12	9	15	12	17
AS.CS.CIS	Computer Science - Cyber Information Security				1	4
AS.CS.GDD	Computer Science - Game Development/Design	2	4	3	4	5
AS.CS.IS	Computer Science Info Systems Option	1	1			
AS.CS.IT	Computer Science - Information Technology	8	5	4	13	2
AS.ENGR	Engineering	15	14	22	9	17
AS.ES	Environmental Studies	1	1	8	6	6
AS.GADM	Graphic Arts, Design and Media			12	17	17
AS.GE.BUS	General Studies - Business Option	220	176	169	140	126
AS.GE.CS	General Studies - Computer Science Option	21	19	21	24	24
AS.GE.HPE	General Studies - Health and Physical Education	13	6	15	18	25

Program Code	Program Title	FY2018	FY2019	FY2020	FY2021	FY2022
AS.GE.HUM	General Studies - Humanities	59	42	29	30	34
AS.GE.MATH	General Studies - Math	45	40	45	29	29
AS.GE.SCI	General Studies - Science	161	172	178	167	137
AS.GE.SS	General Studies - Social Science	91	79	94	76	67
AS.HLSC	Homeland Security	5	5	5	1	
AS.HRTM	Hospitality, Recreation and Tourism	1	6	9	14	4
AS.OTA	Occupational Therapy Assistant	3	2	2	3	4
AS.PBS	Public Service	5	10	2	5	3
AS.PSYR	Psychosocial Rehabilitation		1	1	1	
AS.SW	Social Work				6	16
Total Degrees Conferred		1476	1486	1673	1545	1444

Figure 8-2b. Certificates Awarded by Program, FY2018-FY2022

Program Code	Certificate Program Title	FY2018	FY2019	FY2020	FY2021	FY2022
CC.ALDC	Certificate of Completion in Addictions Counseling	3	3	2	13	8
CC.BS	Certificate of Completion in Business Studies	1	4			
CC.CG	Certificate of Completion in Computer Graphics	1				
CC.FMA	Certificate of Completion in Financial Market Analysis				1	
CC.HHAW	Certificate of Completion in Holistic Health and Wellness				2	
CC.INFO	Certificate of Completion Information Technology		1		1	2
CC.LS	Certificate of Completion Legal Secretary					
CC.TA	Certificate of Completion Teacher Aide	13	5	3	1	
CT.AOMW	Certificate of Proficiency Administrative Ofc Mgmt./Bookkeeping	1				
CT.CJ	Certificate of Proficiency Criminal Justice	3				
CT.FS	Certificate of Proficiency Fire Science		1			
CT.INFO	Certificate of Proficiency Information Technology				1	
CT.LEGA	Certificate of Proficiency Paralegal Studies	14	6	3	8	8
CT.NUTR	Certificate of Proficiency Nutrition	2				1
CT.PT	Certificate of Proficiency Personal Training	2				2
CT.PTA	Certificate of Proficiency Physical Therapy Aide		1			
CT.SBM	Certificate of Proficiency in Small Business Management	1	2	1		1
CT.VC	Certificate of Proficiency Visual Communications	1				
Total Certificates Awarded		42	23	9	27	22



Section 9: Financial Aid

Students rely on a variety of federal and state aid, private and institutional grants, loans and scholarships to help pay for college attendance. More than **half** of our **first-time, full-time students receive** some form of **financial aid**.

Figure 9-1. Percent of First-Time, Full-Time Students Receiving Financial Aid, AY2017-18 through AY2021-22

	AY2017-18	AY2018-19	AY2019-20	AY2020-21	AY2021-22
% of First-Time, Full-Time Students Receiving Financial Aid	57%	59%	60%	64%	71%

IPEDS Financial Aid Survey

Figure 9-2. Financial Aid Dollars (in Thousands) Summary All Programs, AY2017-18 through AY2021-22

	AY2017-18	AY2018-19	AY2019-20	AY2020-21	AY2021-22
Financial Aid Summary All Programs in \$k	\$23,144	\$23,900	\$25,254	\$24,365	\$28,258

NJ IPEDS Form #41

Types, Sources, and Recipients

The following table provides some insight as to the various **types of financial aid**, from which **sources** they come, **how many students receive each type of aid**, and **average dollars** received by students for AY2021-22.

The OCC Foundation has stood in support of Ocean County College and our community by providing financial assistance to both traditional and non-traditional students alike. The Foundation has grown significantly from its beginnings and has contributed over \$18.5 million in scholarship and special program support. This funding continues to provide for tuition, global and domestic travel experiences, capital projects, vocational certificate support, early college, jump start and academy education and so much more.

Figure 9-3. Financial Aid from Federal-State and Institution-Funded Programs, AY 2021-2022, All Students

FEDERAL PROGRAMS	Recipients	Dollars
Pell Grants	2,685	9,198
College Work Study	37	128
Perkins Loans	-	-
SEOG	2,300	372
PLUS Loans	10	24
Stafford Loans (Subsidized)	430	1,253
Stafford Loans (Unsubsidized)	544	1,985
SMART & ACG or other	31	212
CARES ACT- HEERF Student Aid	4,892	9,161
STATE PROGRAMS	Recipients	Dollars
Tuition Aid Grants (TAG)	1,228	1,884
Educational Opportunity Fund (EOF)	40	41
Other NJ Programs (NJ-GIVS, WTC, etc.)	-	-
Distinguished Scholars	-	-
Urban Scholars	3	3
NJ STARS	262	865
CCOG	738	1,521
NJCLASS	5	26
INSTITUTIONAL PROGRAMS	Recipients	Dollars
Grants/Scholarships	2,697	1,585
Loans	-	-

NJ IPEDS Form #41

FOUNDATION Scholarships In FY2022



The Foundation distributed over

\$820k

in scholarships and special program support. Their partnership with Fulfill has helped to alleviate food insecurity for students and their families.



The Ocean County College Fact Book

is produced by the Institutional Research Department. For any questions regarding its content, please contact:

Dr. Alexa M. Beshara-Blauth

*Executive Director, Institutional Planning, Effectiveness, and Compliance Accreditation Liaison Officer
(ALO) – Middle States*

Ocean County College • (732) 255-0400 x2461 • abeshara@ocean.edu

Mary Troy

Director of Institutional Research

Ocean County College • (732) 255-0400 x2931 • mtroy@ocean.edu



Ocean County College



OCEAN
COUNTY COLLEGE

*A public two-year community college
sponsored by the County of Ocean and the State of New Jersey*
College Drive, PO Box 2001 • Toms River, NJ 08754-2001
www.ocean.edu